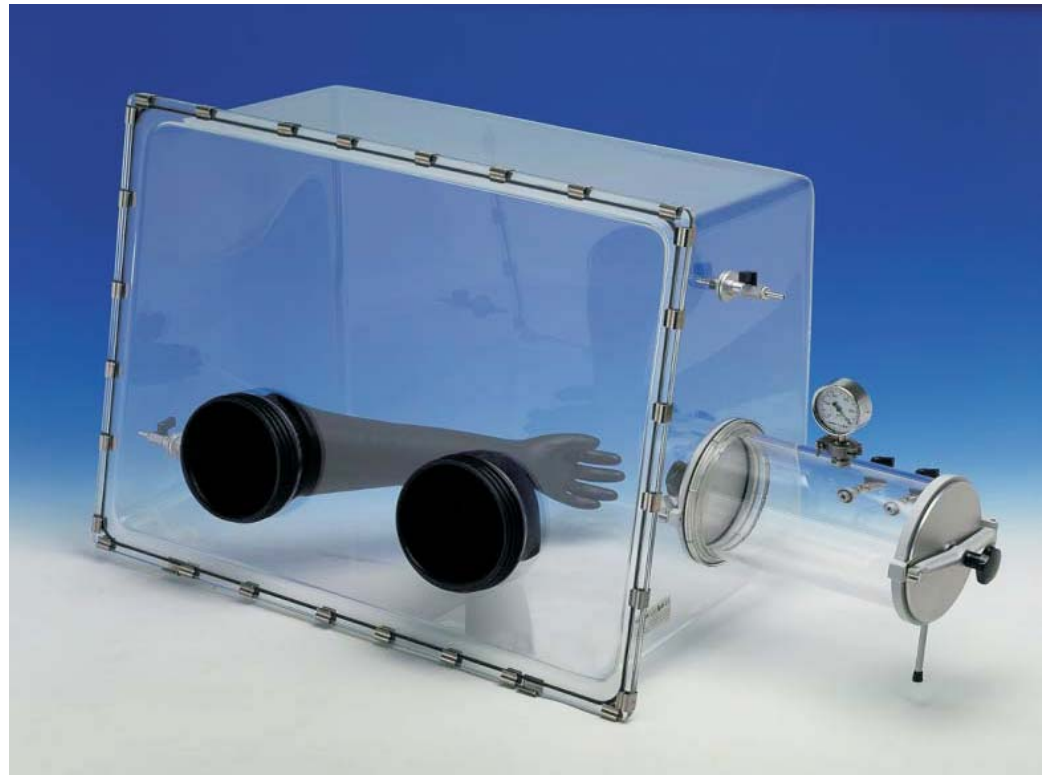


MB GB-2202

Single Piece Molded Glovebox



*Model GB-2202-S pictured above

- Unique single piece molded benchtop design
- No glue or clamps on the body of the box
- Easy to open or remove clamped front window
- Ball valves for gas purge and exhausting of the box
- Side door \varnothing 290 mm
- Bench top system

Options include:

- Electrical power feedthrough
- Low voltage feedthrough
- Stainless steel floor pan
- Internal and external covers for glove ports
- Automated pressure regulation
- Lighting options
- Antechamber

MB GB-2202 Acrylic Glovebox

MB GB-2202	MB GB-2202-S	MB GB-2202-C
<p>Glovebox with access door</p>	<p>Glovebox with antechamber</p>	<p>Glovebox with antechamber and circulation unit</p>
<p>Glovebox</p> <ul style="list-style-type: none"> • Single piece molded housing • Removable front window made of acrylic glass, with 2 glove ports • Pair of gloves made of Neoprene, size 8, lh/rh • Rubber ring fasteners for securing of gloves • Window clamps • Ball valve G ¼", with 2 hose connections, for gas inlet and outlet of the Glovebox <p>Basics</p> <ul style="list-style-type: none"> • The Glovebox can be operated either: <ul style="list-style-type: none"> - at a negative pressure down to: -2,5 mbar - at a positive pressure up to: 2,5 mbar <p>Side door</p> <ul style="list-style-type: none"> • Horizontal opening door ø 290mm, made of aluminum 	<p>Glovebox</p> <ul style="list-style-type: none"> • Single piece molded housing • Removable front window made of acrylic glass, with 2 glove ports • Pair of gloves made of Neoprene, size 8, lh/rh • Rubber ring fasteners for securing of gloves • Window clamps • Ball valve G ¼", with 2 hose connections, for gas inlet and outlet of the Glovebox <p>Basics</p> <ul style="list-style-type: none"> • The Glovebox can be operated either: <ul style="list-style-type: none"> - at a negative pressure down to: -2,5 mbar - at a positive pressure up to: 2,5 mbar 	<p>Glovebox</p> <ul style="list-style-type: none"> • Single piece molded housing • Removable front window made of acrylic glass, with 2 glove ports • Pair of gloves made of Neoprene, size 8, lh/rh • Rubber ring fasteners for securing of gloves • Window clamps • Ball valve G ¼", with 2 hose connections, for gas inlet and outlet of the Glovebox <p>Basics</p> <ul style="list-style-type: none"> • The Glovebox can be operated either: <ul style="list-style-type: none"> - at a negative pressure down to: -2,5 mbar - at a positive pressure up to: 2,5 mbar
<p>Technical data</p>	<p>Antechamber</p> <ul style="list-style-type: none"> • Evacuatable antechamber made of acrylic glass, with 2 horizontally opening doors made of aluminum, including: <ul style="list-style-type: none"> - Ball valve G ¼", with hose connections, to be connected to a vacuum pump - Ball valve G ¼", with hose connections, for gas purging of the antechamber - Vacuum gauge <p>Basics</p> <ul style="list-style-type: none"> • The antechamber can be evacuated into the fine-vacuum range, up to a pressure of less than 1 mbar absolute 	<p>Antechamber</p> <ul style="list-style-type: none"> • Evacuatable antechamber made of acrylic glass, with 2 horizontally opening doors made of aluminum, including: <ul style="list-style-type: none"> - Ball valve G ¼", with hose connections, to be connected to a vacuum pump - Ball valve G ¼", with hose connections, for gas purging of the ante-chamber - Vacuum gauge <p>Basics</p> <ul style="list-style-type: none"> • The antechamber can be evacuated into the fine-vacuum range, up to a pressure of less than 1 mbar absolute
<p>Glovebox properties</p> <ul style="list-style-type: none"> • Length: 950mm • Depth below: 540mm • Depth above: 420mm • Height: 650mm • Volume of Glovebox: 300l • Weight: 21kg 	<p>Technical data</p>	<p>Circulation unit</p> <ul style="list-style-type: none"> • Gas/Air circulation system Including : <ul style="list-style-type: none"> - Radial ventilator 230V (110V) - Ultrafilter on gas-inlet - Flexible hose NW25, L=250mm
<p>Glovebox properties</p> <ul style="list-style-type: none"> • Length: 950mm • Depth below: 540mm • Depth above: 420mm • Height: 650mm • Volume of Glovebox: 300l • Weight: 21kg <p>Antechamber properties</p> <ul style="list-style-type: none"> • Diameter: 290mm • Length: 350mm • Volume of antechamber: 22l 	<p>Glovebox properties</p> <ul style="list-style-type: none"> • Length: 950mm • Depth below: 540mm • Depth above: 420mm • Height: 650mm • Volume of Glovebox: 300l • Weight: 21kg <p>Antechamber properties</p> <ul style="list-style-type: none"> • Diameter: 290mm • Length: 350mm • Volume of antechamber: 22l <p>Circulation characteristics</p> <ul style="list-style-type: none"> • Ventilator: 230V (110V) / 50-60Hz / 80W (95W) 280l/min / 2250 RPM • Inlet filter: Precipitation efficiency 99,99%, Test sample: rad.aerosols, ø < 0.3 micron 	<p>Technical data</p> <p>Glovebox properties</p> <ul style="list-style-type: none"> • Length: 950mm • Depth below: 540mm • Depth above: 420mm • Height: 650mm • Volume of Glovebox: 300l • Weight: 21kg <p>Antechamber properties</p> <ul style="list-style-type: none"> • Diameter: 290mm • Length: 350mm • Volume of antechamber: 22l <p>Circulation characteristics</p> <ul style="list-style-type: none"> • Ventilator: 230V (110V) / 50-60Hz / 80W (95W) 280l/min / 2250 RPM • Inlet filter: Precipitation efficiency 99,99%, Test sample: rad.aerosols, ø < 0.3 micron



M. Braun Inertgas-Systeme GmbH Head-office Germany • Dieselstr. 31, D-85748 Garching • Phone: +49(0) 89-3 26 69-0 • Fax: +49(0) 89-3 26 69-105 • E-mail: info@mbraun.de • www.mbraun.de

M. Braun Inc. USA • 14 Marin Way, Stratham, NH 03885 • Phone: 603-773-9333 • Fax: 603-773-0008 • E-mail: info@mbraunusa.com • www.mbraunusa.com